

Quick Assessment of Open ended Activities in R Commander

Serrano, V.¹, Cuadros, J.¹, Martori, F.¹,
Calvo, M.², Miñarro, T.², Gorina, V.¹

¹ IQS Universitat Ramon Llull, Barcelona (Spain)

² Departament de Genètica, Microbiologia i Estadística, Universitat de Barcelona, Barcelona (Spain)



- **Open-ended activities are commonly used in teaching STEM disciplines (problems, cases, projects...)**
- **Assessment is commonly done through reports or closed-form questionnaires**
 - Difficult to grade (Time-consuming)
 - Activities are hard to evaluate
 - Assessment does not reflect students' work and/or students' learning difficulties

Open-ended activities

- **Tracing user actions provides powerful information for educational research and for generating useful feedback for users and instructors:**
 - classification of students
 - identification of plagiarism
 - adaptive behaviour detection
 - disengagement detection
- **Approach to an assisted assessment of open-ended activities**

Using traces to capture students' work

- **R Commander**
 - It's a graphical user interface (GUI) widely used for teaching Statistics.
 - R Commander allows the use of R without compromising the learning process as command line interface to R can be an obstacle to many students (Fox, 2005).
- **R Commander TR**
 - It's a modified version of R Commander that captures users' actions in a *log* file in the working directory

R Commander TR

```

<EVENT application='Rcmdr-20140521' action='EXECUTE' user=
'user_879903' session='20150410093206.769' number='3' time=
'20150410094141.474' type='active'><PARAM name='Command' value=
'pbinom(c(0),%20size=9,%20prob=0.3294556,%20lower.tail=FALSE)' />
</EVENT>
<EVENT application='Rcmdr-20140521' action='EXECUTE' user=
'user_879903' session='20150410093206.769' number='4' time=
'20150410094141.474' type='reactive'><PARAM name='Result' value=
'0.972593860817254' /></EVENT>
<EVENT application='Rcmdr-20140521' action='EXECUTE' user=
'user_879903' session='20150410093206.769' number='5' time=
'20150410094336.308' type='active'><PARAM name='Command' value=
'0.3294556*9' /></EVENT>
<EVENT application='Rcmdr-20140521' action='EXECUTE' user=
'user_879903' session='20150410093206.769' number='6' time=
'20150410094336.318' type='reactive'><PARAM name='Result' value=
'2.9651004' /></EVENT>

```

Traces

- **Dashboard**

- We have created a web platform that allows the visualization and analysis of the collected traces

- **Both the traced version of R Commander and the dashboard are available at**

- <http://asistembe2.iqs.edu/rcmdrtr/>

RCmdrTR dashboard

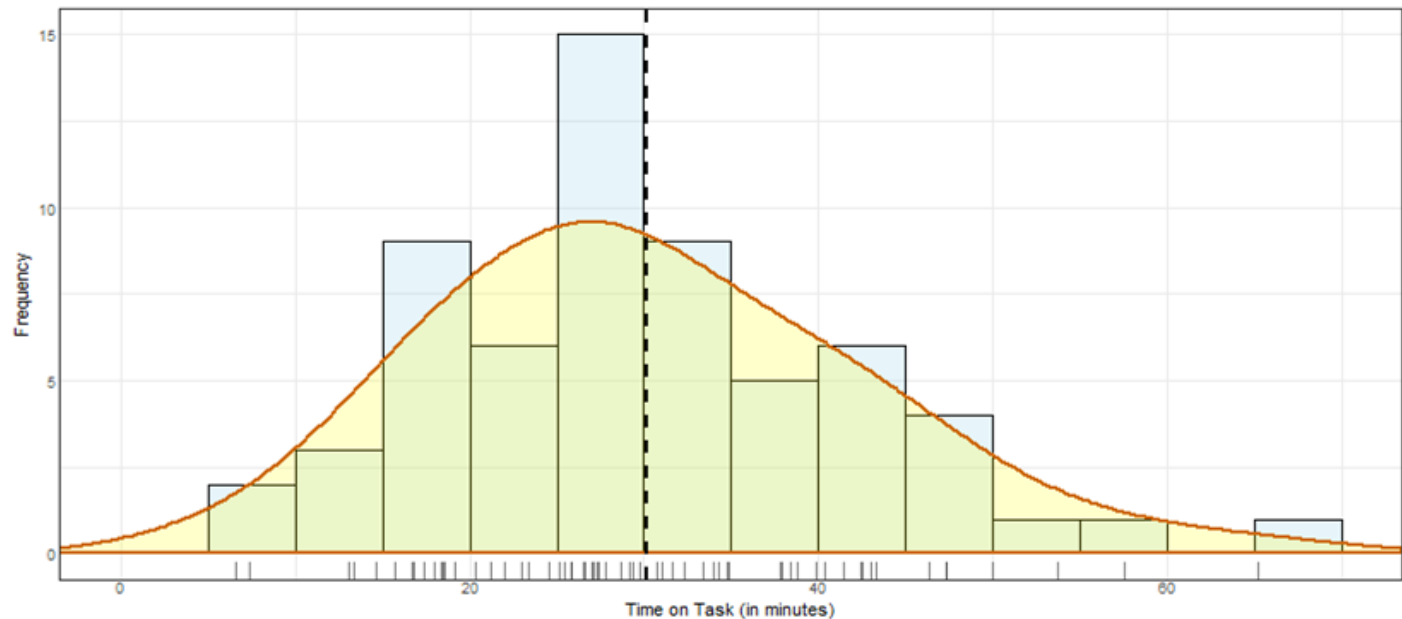
Time-on-Task
Distribution

Number-of-
Actions
Distribution

Number-of-
Actions vs Time-
on-Task

Action time by
student

Functions
Wordcloud



Distribution of the time on task spent by student. A histogram and an estimate of the density curve are presented.

The mean of this distribution is 30.13 minutes.

71 % of students have worked between 18 and 43 minutes.

There is no sign of more than one mode for time on task.

RCmdrTR dashboard

Data Input and Problem Definition

Global Results

Observation Milestones

Evaluation Milestones

Student-specific Results

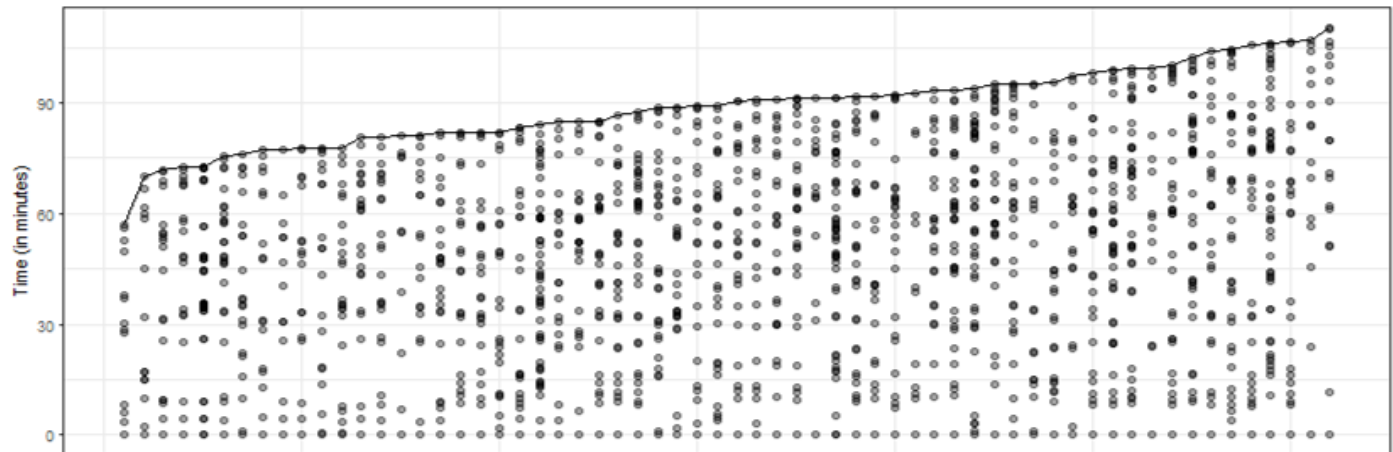
Time-on-Task
Distribution

Number-of-
Actions
Distribution

Number-of-
Actions vs Time-
on-Task

Action time by
student

Functions
Wordcloud



Place your mouse over a data point to identify the student.

RCmdrTR dashboard



PERSONA CIÈNCIA EMPRESA
UNIVERSITAT RAMON LLULL



Universitat de Barcelona

ASISTEMBE

Analytics, Simulations and Inquiry
in STEM and Business Education
Research Group

http://127.0.0.1:4885 | Open in Browser

Publish

Data Input and Problem Definition

Global Results

Observation Milestones

Evaluation Milestones

Student-specific Results

Time-on-Task
Distribution

Number-of-
Actions
Distribution

Number-of-
Actions vs Time-
on-Task

Action time by
student

Functions
Wordcloud

pbinom ppois
pnorm
qnorm local

RCmdrTR dashboard



PERSONA CIÈNCIA EMPRESA
UNIVERSITAT RAMON LLULL



Universitat de Barcelona

ASISTEMBE

Analytics, Simulations and Inquiry
in STEM and Business Education
Research Group

Data Input and Problem Definition

Global Results

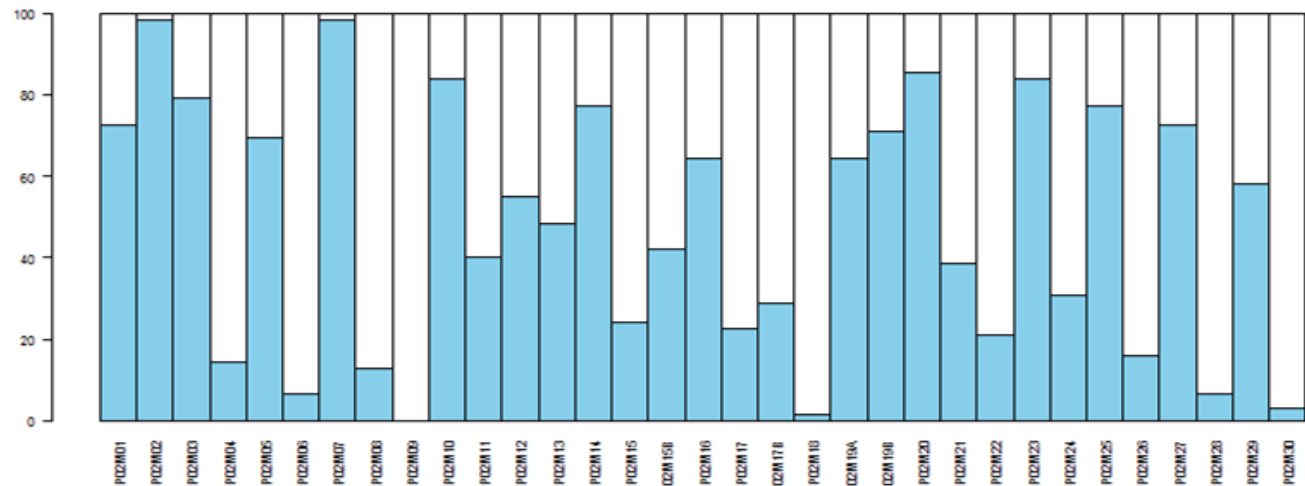
Observation Milestones

Evaluation Milestones

Student-specific Results

Average per
Milestone

Heatmap



RCmdrTR dashboard



PERSONA CIÈNCIA EMPRESA
UNIVERSITAT RAMON LLULL



Universitat de Barcelona

ASISTEMBE

Analytics, Simulations and Inquiry
in STEM and Business Education
Research Group

Data Input and Problem Definition

Global Results

Observation Milestones

Evaluation Milestones

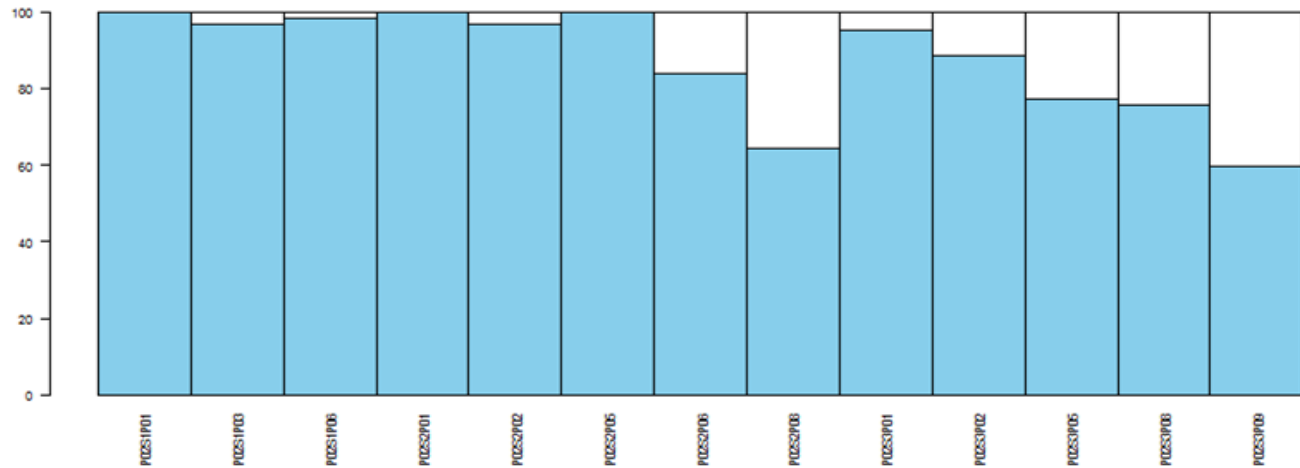
Student-specific Results

Average per
Milestone

Heatmap

Grade
Distribution

Actions-Grade-
Time Scatterplot



RCmdrTR dashboard



PERSONA CIÈNCIA EMPRESA
UNIVERSITAT RAMON LLULL



Universitat de Barcelona

ASISTEMBE

Analytics, Simulations and Inquiry
in STEM and Business Education
Research Group

Data Input and Problem Definition

Global Results

Observation Milestones

Evaluation Milestones

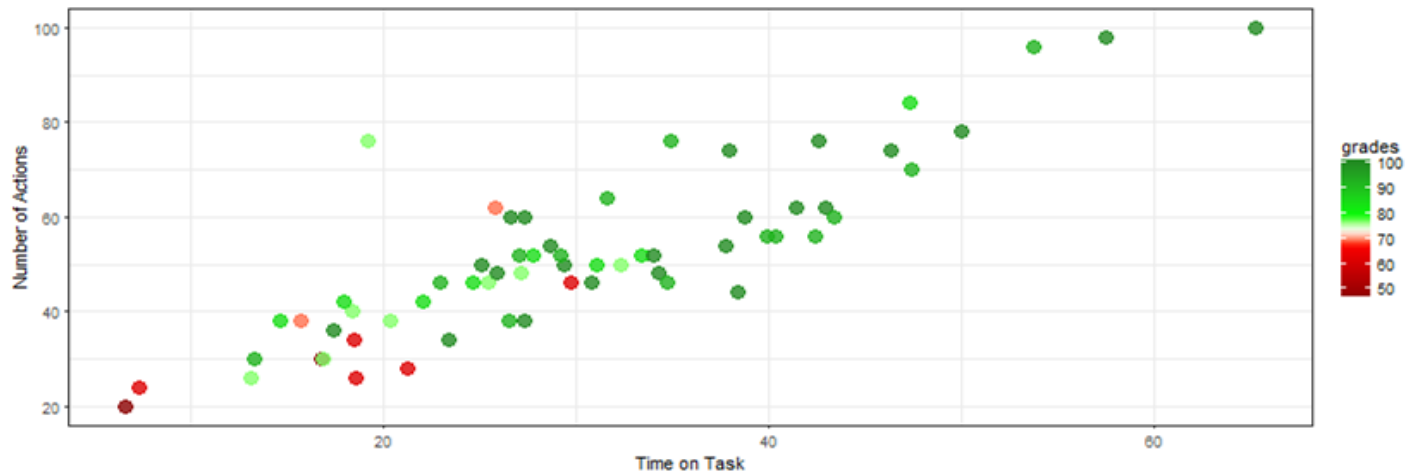
Student-specific Results

Average per
Milestone

Heatmap

Grade
Distribution

Actions-Grade-
Time Scatterplot



Place your mouse over a data point to identify the student.

RCmdrTR dashboard

- **Funding agencies**

- Aristos Campus Mundus 2015
- Secretaria d'Universitats i Recerca. Departament d'Economia i Coneixement. Generalitat de Catalunya



Campus de
Excelencia
Internacional



**Generalitat
de Catalunya**

Acknowledgments

- **Dr. Vanessa Serrano**
vanessa.serrano@iqs.edu
- **Dr. Jordi Cuadros**
jordi.cuadros@iqs.edu
- **Dr. Francesc Martori**
francesc.martori@iqs.edu

Contact info